

TEST REPORT

Performance Testing Services

Test Report: 1628

Revision: Release

Test Report Date: 02/05/08
Sample Receipt Date: 02/01/08
Test Start Date: 02/04/08
Test Completion Date: 02/04/08

Customer: JIMDI Plastics
Gary Stroven
5375 Edgeway
Allendale, MI 49401

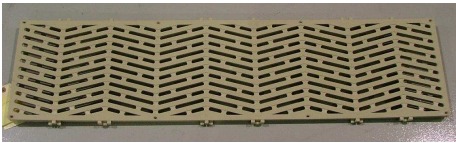
Page 1 of 2

PTS RFQ #: 1628

CONDITION OF SAMPLES AS RECEIVED: Normal

Product(s) Tested

One (1) Sure-Step Deck Section (length 47-3/8" x width 11-3/4").



Test Method/Description

Test #1

- Mount one (1) Sure-Step deck section (11-3/4" width) to simulated joists that are 16" on center using four (4) screws.
- Apply a 85 lb distributed load to a 1 foot square area for one (1) hour.
- Remove the load and inspect.

Test #2

- Using the same setup from Test #1, apply a 400 lb distributed load to a 1 foot square area for one (1) hour.
- Remove the load and inspect.

Acceptance Level

For information only.


Test Results

Both Test #1 and Test #2 did not show any signs of degradation to the product during or after completion of the testing.

Temperature and Humidity during this testing = 19.6C/26%RH.

Test Equipment Used

Equipment#	Serial Number	Description	Calibration Due
401	PTS	Digital Scale	02/14/09
PTS	PTS	Dead Weights	06/01/08
PTS	PTS	Measuring Rule - 36"	Ref. Only

Testing Conducted By: 
Kirk Craymer
Test Engineer

Performance Testing Services 5241 Edgeway Suite B Allendale, MI 49401 (616) 895-1244 Fax: (616) 895-1244

THIS TEST SUMMARY REPORT SHALL NOT BE REPRODUCED EXCEPT IN FULL ONLY WITH PERFORMANCE TESTING SERVICES APPROVAL.
TEST RESULTS IN THIS TEST SUMMARY REPORT RELATE ONLY TO THE SPECIFIC TEST SAMPLE(S) LISTED!

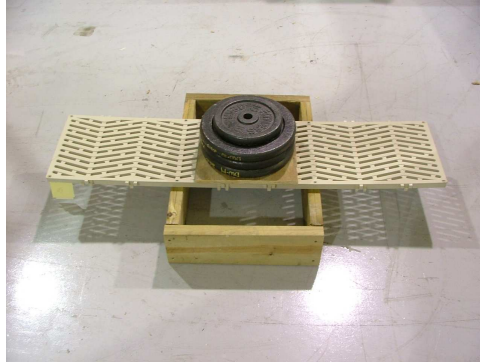
TEST REPORT

Performance Testing Services

Test Report: 1628

Page 2 of 2

Test Setups



Test #1 Setup – 85 lbs



Test #2 Setup – 400 lbs